

Tri-State Antique Engine and Thresher Assn, Inc.

VOL. 47, NO. 1

ANNUAL NEWSLETTER

JUNE 2016

OFFICERS:

Brendon Haack • President
785-332-4120

Ken Beougher • Vice President
785-332-4822

Darci Schields • Secretary
785-734-7172

Rod Klepper • Treasurer
785-734-7369



DIRECTORS:

Gary Brubaker

Steve Busse

Lonnie Coon

Norman Dorsch

Dennis Wright

MASTER OF CEREMONIES:

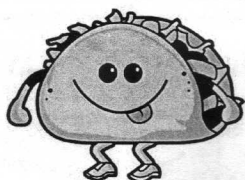
Michael Sager

More Information: www.ThresherShow.org • www.birdcity.com

Facebook Page = The official Tri-State Antique Engine and Thresher Association

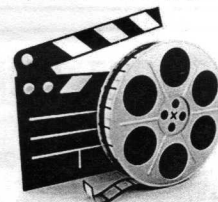
COMMUNITY NIGHT

DINNER AND MOVIE ★ THURSDAY JULY 28TH ★ AMERICAN LEGION HALL



Join us for TACO NIGHT ★ Dinner will begin at 6:00 PM

This year in place of music we will be showing a movie about the DUST BOWL. This should bring back memories for several in attendance.



FRIDAY NIGHT • JULY 29TH

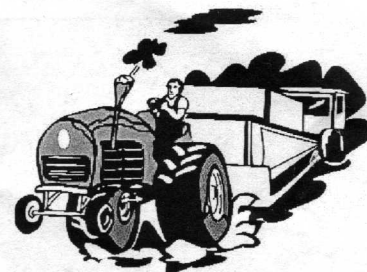
We voted to bring back the old McDonald Bar-B-Que meal and corn on the cob, cooked by a steam engine. Meal will be served on the show grounds prior to the Tractor & Steam Engine Pull. Mike Knapp knows the recipe and has agreed to be head cook.

Volunteers will be needed to help serve.

TRACTOR AND STEAM ENGINE PULL

Friday July 29th

Start Time 6:30pm



Once again there will be a Kiddie Tractor Pull where the top 3 in each age category will qualify to participate at the State Fair.

NEW SIGN

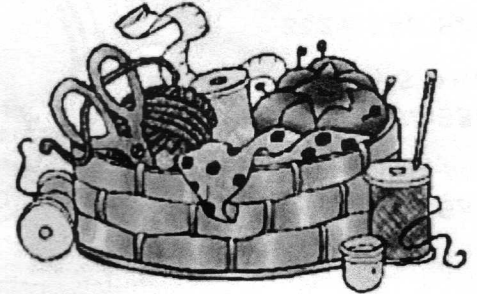
Plans have been made to have a new sign installed along Hwy 36. Sign will be placed on a raised mound and will include an antique threshing machine and lighted flag pole.



Fiber Arts and Quilt Room

The 2016 Thresher Show will be here before you know it. A big thank you to everyone who displayed their one of a kind items in the Quilt Room this last summer. What a nice variety of quilts we had on display. Examples of cross stitch, crewel work, crochet, knitting, tatting, embroidery, applique, along with pieced quilts, crazy quilts and friendship quilts to name a few. We had so many lovely comments on the displays. Thank you ladies that volunteered to oversee the Quilt Room during the show, each of you were much appreciated.

The show this year will be displaying quilts made by Gail Eberle of Oakley, Ks. Gail has won awards at National Quilt Shows and has had quilts featured in quilting magazines. We are looking forward to showing her quilts. The Clark family donated two quilts to the association in 2015 and we have those on display. We are also looking forward to having as much variety as we did last year. We have many talented quilters in our area who have created beautiful items and it is an honor to display them.

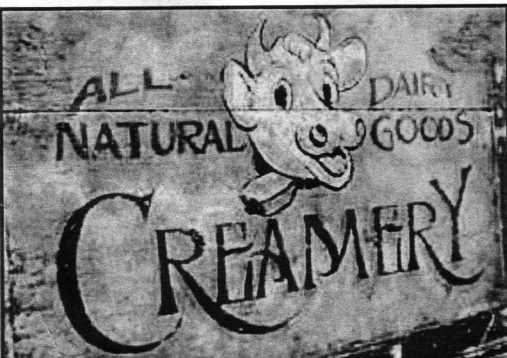


Looking forward to the 2017 show, the Quilt Room would like to have a display of Friendship Signature Quilts along with information about them. Several of these quilts have been donated through the years, and will be displayed in 2017.

If you have a Fiber Arts item you would like to share, please call Marcia Hickert at 785-734-2522. As always, we are located next to the Print Shop. We are looking forward to another great year at the Tri-State Antique Engine and Thresher 2016 show. See you then. By: Marcia Hickert

WRIGHT BUILDING

The lights and fans for the balcony have been purchased and will be installed. Other work includes: Another coat of paint on the balcony floor and stairs, installation of wire shelves and ceiling lights in the big room. After a final clean up, construction will be complete. The next step involves designing display cases as well as deciding on what items should be displayed. Our plan is for a permeant display, in a museum type of arrangement that will allow visitors to enjoy year round.



Rodney Neitzel will have the exterior of the Creamery primed and painted prior to the show, using a Historical Light Yellow with White trim.
COME CHECK IT OUT !!!

TREASURER'S REPORT

We had another great year, completed several projects and funding is in place to complete the Wamhoff Shower Building, Bressler Hanger and Wright Building.

| | | |
|----------------------------|-------|-------------|
| Checking Account | ————— | \$15,814.66 |
| Reserved (New Sign) | ——— | \$5,250.00 |
| Reserved (Bressler Hangar) | — | \$5,400.00 |

| | | |
|--------------------------|-----|--------------|
| Actual Available Balance | ——— | \$ 5,164.66 |
| Wright Building Balance | ——— | \$ 23,569.31 |
| Endowment Fund Balance | —— | \$ 20,871.97 |

SOD HOUSE NEWS

By: Mary Dorsch

Did you know: The only visible snake in the Sod House is a rubber one placed there by Lucille Wright for the children to locate.

Sod for our Sod House was cut by our thresher men from the Walde Hempler Farm, using a sod cutter made by August Busse several years ago. The cutter is stored on the thresher grounds.

The 24" walls of sod are 3" thick and 12" long, and laid with staggered ends. Rebar with woven wire, cut and tied together, reinforced the corners of the sod house and around the window & door frames, which the men also made.

Sod on the walls was laid with grass down so it wouldn't grow. On the roof it was laid with the grass up, hoping rain would allow grass to grow. Sometimes a flower or cactus appeared! It was said, that it would take 3" of rain before it would run off the roof.

This past year the Martinez brothers closed and repaired holes made by rodents and weather. They did a great and much needed job of it!

Our Sod House is placed on the show grounds between the country church and the school house and is open for viewing during the show. Please stop in for a visit!



Once the small schoolhouse called Highland School, rang out with the sounds of young voices. Cheyenne County Rural School District 66 was located atop a hill nine miles southwest of St. Francis, Kansas. This school house now serves as an example of small rural schools at the Tri-State Antique Engine and Thresher Show grounds in Bird City, Kansas. Pupils in rural schools like this received varied classroom opportunities provide by the multitalented rural school teacher. For many years Dorothy Mast and Rosemary Powell have presented historical programs each year at the Thresher Show. We honor Dorothy for her many talents in teaching youngsters about the way of life on the high plains, and helping them make a craft illustrating each interesting program. Dorothy passed away February 14, 2016 and she is and will be greatly missed. We continue to add to our Honor Roll of former country school students and teachers. Please let us know if we can add your name to this roll. The Schoolhouse is open from 10:00am to 4:00pm each day of the show. Stop in and visit us.

~ The Schoolhouse Committee

The Tri-State Antique Engine and Thresher Association welcomes any school, group or organization the opportunity to visit and tour the show grounds throughout the year.

Please contact any of the officers for more information.



Eggers 8 Building

We will be looking forward to entertaining visitors again this year. We have a few changes in mind and will be ready when it is show time. We could use volunteers, so if you have extra time, we would welcome the help.

BRESSLER HANGAR The wind has moved our hangar off the cement slab, so once it is back in place we are planning to anchor it down, close off the west side, install a roll up door in the north end, walk in door in the south end, install new lights and outlets and paint the interior and exterior. An award of \$5,400 through the Dane G Hansen Foundation Community Grant has allowed us to complete this project.

UNDER CONSTRUCTION

- ◆ Ken Beougher restored a three point ONE BOTTOM PLOW
- ◆ Large metal frames were installed on the wall to create a permeant display for GRADUATES CLASS PICTURES
- ◆ Norman Dorsch and Willie Martinez built the portable display panels for the DALE LYDIG ANTIQUE TOOL COLLECTION.
- ◆ We completed the 30ft by 60ft air conditioned portion of the WRIGHT BUILDING and used it for our 2015 show
- ◆ Velda Wright, with the help of Bethany Mason and Jane Young applied the first coat of paint to the floor of the BALCONY OF THE WRIGHT BUILDING
- ◆ Norman Dorsch and Willie Martinez harvested and installed SOD on the North side of the Wright Building
- ◆ Radean and Velda Wright collection of ANTIQUE TRACTORS are on display in the Wright Building
- ◆ Maynard Wright's PAINTINGS of historic Bird City buildings are on display in the Wright Building
- ◆ Michael Sager, with the help of Robert Bell and Brendon Haack completed major improvements on our show grounds SPEAKER SYSTEM
- ◆ The Lynn and Candy Glasco family built a stub wall and created a BIRD CITY RURAL HIGH SCHOOL ALUMNI AREA in the Eggers Building
- ◆ Gerald Wright, with the help of several volunteers, fabricated, welded and installed the CENTER CHURCH BELL TOWER at the middle entrance of our show grounds
- ◆ Cement pads have been completed for the antique VALLEY SPRINKLER donated by Tri-State Irrigation
- ◆ Rex Weisapl and Gerald Wright dismantled and repaired the STEAM ENGINE owned by Bob McConvil
- ◆ Royce Kehlbeck and Rod Young moved the BRESSLER HANGAR onto the cement slab
- ◆ New AIR CONDITIONER was purchased and installed in the Quilt Building
- ◆ David Burns, with the help of Rex and Gerald repaired the frame and fender on one of our CASE tractors
- ◆ Bob and James Gallo cleaned and painted our HUBER STEAM ENGINE during the show
- ◆ The Don Wright family, with funding provided by a grant from Bird City Century II, did the trenching and installed ELECTRICAL CONDUIT and WIRE to service the South portion of our show grounds
- ◆ Gerald Wright repaired the stand and installed new electrical connections on our large trailer
- ◆ Brogan and Granite Bock, and Elmer Kelner painted our TRASH CANS bright yellow
- ◆ Don Jackson built a REPLICA ROTOR and installed the blades on our gyrocopter
- ◆ St. Francis High School students sanded, primed and painted our MAIN STAGE
- ◆ We built the much needed WAMHOFF SHOWER BUILDING.
- ◆ Cheyenne County Road & Bridge Dept. hauled the FILL DIRT for the WAMHOFF BUILDING pad and additional GRAVEL on our roads
- ◆ City of Bird City provided the FILL DIRT for the WAMHOFF BUILDING pad
- ◆ Jan Busse and Leisha Kish primed, painted and did the final clean-up of the WAMHOFF BUILDING prior to the 2015 show



PROJECTS COMPLETED

SUMMER 2015 — 2016



DONATIONS RECEIVED

SUMMER 2015 — 2016

- ◆ Dean and Theresa Knapp donated an antique JOHN DEERE SEED POTATO CUTTER and WOODEN CORN SHELLER
- ◆ Junior Magley donated CHEMICALS & sprayed several areas of our show grounds for sand burrs during the year
- ◆ Roger Orth donated his fathers, 1950's model NEW IDEA CORN PICKER/SHELLER and metal grain box
- ◆ Leroy Connett family donated 3 WOODEN SHAVES for horse drawn buggy's

- ◆ Royce Kehlbeck donated an ANTIQUE SEED CLEANER/TREATER in excellent condition
- ◆ Darrel Busby donated a 120 Volt, gas powered, PORTABLE GENERATOR
- ◆ Norman Dorsch donated a set of RUNNING WHEELS to go under the Orth grain box
- ◆ Dale Lydig family donated 3 antique CORN DRILLS, an assortment of steel wheels and several horse drawn equipment attachments
- ◆ Rex and Dale Smith donated the famous, ROYCE SMITH CLOWN CAR to the association
- ◆ Bud Enfield donated 3 ANTIQUE TRACTORS and several farm implements to the association
- ◆ A Dane Hansen Foundation Grant & a large donation from Sporer Land Development Co. allowed us to pave a large area to display our HORSE DRAWN FARM EQUIPMENT
- ◆ Demi Shahan donated a large FUNK SEED sign & A-FRAME with a chain hoist for our shop
- ◆ Mitchell Schlepp donated the antique FARM BUREAU SEED CLEANER
- ◆ Three large wind TURBINE BLADES donated by Bird City Century II, were installed at the three main entrances to the show grounds
- ◆ Provided our SHOW GROUNDS for American Implement Farm Day to demonstrate the latest in guidance systems
- ◆ Provided the ANNOUNCERS STAND for the Community Church's Revival in the park
- ◆ Hosted our annual Easter SUNRISE SERVICE
- ◆ Provided our SHOW GROUNDS for the Northwest Regional FFA Dairy Judging Contest with over 300 students in attendance
- ◆ Worked with the Pumpkin Patch by providing BENCHS, CORN PICKER/SHELLER and a STEAM ENGINE operated by Brendon Haack the last two weekends in October
- ◆ Hosted the McDonald-Bird City 4TH OF JULY FIREWORKS display
- ◆ We took two tractors & a pickup to the CHEYENNE COUNTY FAIR PARADE
- ◆ Doug and Karen Fleming hosted a HAMBURGER & BRATWURST COOKOUT and Brad Schneider organized a large crew to do FINAL CLEANUP Tuesday evening prior to our 2015 show
- ◆ We hosted our annual COMMUNITY POT LUCK SUPPER for our out of town helpers on Wednesday evening prior to the show



COMMUNITY EVENTS

SUMMER 2015 — 2016



Country Church

By: Ken Beougher

The Neville Methodist Church will celebrate its 32nd anniversary since it moved to the Tri-State Antique Engine and Thresher Show grounds.

The church was used for two special services this past year: A memorial service was held for Kathryn Neville Bunges who was the granddaughter of George K. Neville and Sara R. Neville. George and Sara sold the land for the Methodist Episcopal Church for \$1.00 in 1910. Kathryn attended the church during her early childhood years. The other special service was the wedding of Dana Nelsen to Don Barnhart. She is the great-granddaughter of Ed Nelsen and the granddaughter of Harold Nelsen. Ed and Harold were charter members of the Tri-State Antique Engine and Thresher Show.

The Neville Church will hold a service
Sunday July 31, 2016
from 9:00-9:30 am CST.

Come for the worship service to conclude the show. Praise the Lord.



National Shows

We have been in contact, had phone conversations and sent packets of information about our organization offering to host their

National Show at a future date to the following organizations:

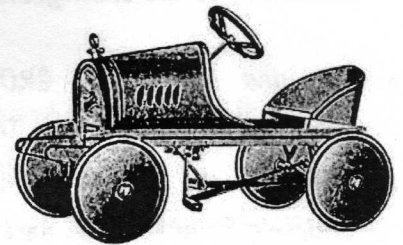
- J. I. CASE HERITAGE FOUNDATION
- RUMLEY PRODUCTS COLLECTORS, INC.
- ANTIQUÉ CATERPILLAR MACHINERY OWNERS CLUB
- J. I. CASE COLLECTORS ASSOCIATION INC.

The response has been positive; the opportunity will put us at a National Level. More information to come!

WILKENS BUILDING

Art is having 30" shelving installed on the entire length of the south wall and two thirds of the north wall to display his large collection of over 100 pedal cars and tractors.

He hopes he can finish the interior room and display his collection of miniature cast tractors and farm machinery for this years show. This is a must see building for everyone during the show, so please take the time see the new displays and thank the Wilkens Family for sharing their collections.



4TH ANNUAL BIG ED'S

HORSESHOE TOURNAMENT

SATURDAY • JULY 30TH • 1:30 PM

This year we will include a new KIDS DIVISION - 15 years old and under. Big Ed's will donate \$200 in prizes and a 100% payback of all the \$5.00 entry fees provides the players a great place to watch the parade while enjoying an afternoon of competition with friends.

STEAM BOILERS • STEAM ENGINE NEWS

Hello to everyone! The KASSA (Kansas Antique Safety Show Association) meeting in Salina, KS on 3-12-16 got a little heated up. Brendon Haack, Rex Weishapl, Gerald Wright, Mike Levin and Randal Neff attended the meeting.

After the minutes and treasure reports were done. I, Gerald Wright, your boiler inspector, was under attack. We had boiler repair done in Garden City, KS by a certified welder that builds high pressure vessels for oil field applications that work up to 10,000 PSI. By our bylaws, it is up to your boiler inspector to determine how a repair can be done. This did not sit well with the group. So now the bylaws have been changed to all boiler repairs are to be done by a welder who has the RV stamp. Talk about cost for owners out here in Western Kansas. It will make it almost impossible to find anyone. I called all around to different places about this repair to be done and no one was available to come out here to fix our problem. The welder that performed the task was so excited about his chance to really run the steam engine, he came to our show with his family and had a good time.

With a little luck, I am stepping down as your boiler inspector. Brendon Haack will be the voting member and Rex Weishapl will be the alternate. This is another change I brought up and was voted on after quite a bit of discussion. We now can have two boiler inspectors at our shows. This will eliminate the problems that have occurred at shows when someone is sick or passes away and will help things move along when inspecting boilers.

With young people, they have new ways of doing things. Some not so good, and others are really good. Rex and Brendon have come up with a way of taking pictures inside a fire box and the outside of boilers to show where the test spots were done at. They place white rectangular boxes at the test sights and the ultra sound readings are written in. Anyone can look at the picture and know exactly where the test was performed. They passed pictures around the group to get their responses. They were just amazed at how it looked and how much better and quicker the job can be done than making dots on a piece of paper and trying to draw objects to express locations of a test area. The excitement was a lot like when I introduced sand blasting spots for testing compared to emery tape and thumb pressure and paper towels or rags to clean test spots.

I have been your boiler inspector for 30 some years. Unfortunately, I can't fit through the fire box doors, I don't climb up and down like I used to, as well as losing a little of the excitement. However, I have two young men that have worked with me since they were 10 or 11 years old who are very knowledgeable about our engines. This turn over will take place after they pass the hands-on inspections they are to perform under the eyes of the master inspector who will be coming to our show sight when we are working on the boilers before this year's show.

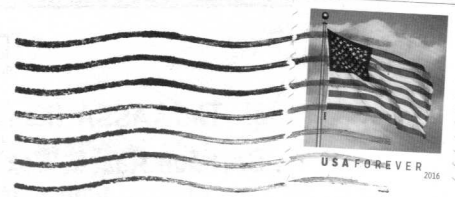
Prairie Plowing Days, nine miles south of Concordia, KS will be August 27 & 28, 2016. This 160 acre plowing adventure is attempting to break a Guinness Plowing record with over 10 steam engines plowing on Saturday. If you want more information, call Cloud County Tourism at 785-243-4303; Kurt Kocher at 785-243-0083; or Brad Smith at 785-243-0067. I think this will be quite exciting and we might even bring an engine.

Sometime in the future, we may be hosting the International Heritage Case Show or Rumely International gathering here in Bird City, KS. This is in the works right now.

I will still be working at the upcoming shows but it is time to call it a day. I have really enjoyed being your inspector for all these years.

Thank you all, Gerald Wright

Tri-State Antique Engine & Threshers Association
PO Box 9
Bird City, KS 67731-0009



Join us for our 63rd Annual Show

July 28, 29, 30, & 2016

CAMPING / RV ELECTRIC HOOKUPS



For those interested in camping on the show grounds. We have twelve 30 amp electric hookups available in the lot southeast lot. There is also a very nice RV Park along Hwy 36, about 1/4 mile from the show grounds that has full hook-ups, including 30 & 50 amp electric hookups and water. They are matching our price and



For show ground reservations please contact Mary Smith at 785-443-1702 and make a \$40.00 deposit.

For reservations at T-N-T RV Parking, please call 785-734-7100

WAMHOFF SHOWER BUILDING

The new shower building includes five showers and two handicap restrooms. Final touches to the building are being made this spring and will be completed prior to this years show. The shower house is a GREAT IMPROVEMENT FOR OUR CAMPING AND OVERNIGHT GUESTS.



8TH ANNUAL • FUN RUN • SATURDAY JULY 30TH
ALL AGES RUN OR WALK • 1 MILE 2 MILE 5K RACES

For information, contact Morgan Sherlock at 785-772-7014

Registration forms available at City Hall, Hometown Market or go to www.birdcity.com/upcoming-events

This has been a great addition to our show; a fundraising event on behalf of the Cheylin HS Volleyball Team.